

Owner's Manual for AH-0822 Gas Detector

■ Operation:

Whenever the Gas alarm is first powered up, it will sound briefly to let you know it is receiving power and that the alarm is functioning. Within 8 minutes your alarm will start monitoring for gas. Not suitable for the detection of other gases than Methane/Propane gas. Alarm threshold is prior to 25% LEL/LFL.

The reset time for methane/propane gases is about 10 minutes depends on the air flow rate.

Fault Status: Red LED ON steady

Normal Status : Green LED ON steady

Alarm Status : Red LED ON every 3 seconds

■ Maintenance:

This product does not need special maintenance. Performing the self-test regularly to make sure the detector is operating normally.

■ Test:

Detector undergoes strict quality control and inspection before leaving the factory. To test, inject a small volume of gas into the detector through detection hole. The detection device will activate when the gas density is over the standard. To maximize detectors operating life, do not inject the gas when the detector is charging. If the detector still sounds after testing, this could mean too much gas was injected. It will return to normal when gas density decreases.

WARNING!!! Do not inject too much gas to avoid the danger of poisoning

■ Trouble Shooting:

| | |
|--|---|
| Power indicating LED doesn't light | Check the input power to see if it is normal. Check the plugs to see if the connection is good. Power indicating LED is out of order. |
| Alarm-indicating LED doesn't light when active | Alarm-indicating LED is out of order. |
| Buzzer does not sound when active | Inside buzzer failure. |
| No action when testing | The injected gas is not the right type for the detector. |
| Sensor fault signal | The detector sounds constantly with RED Led ON when sensor is not working. |
| Warm-up period / Green LED ON | Detector needs 24 Hour to normal condition after power is engaged |
| End-of-Life Signal | The detector will sound with red Led ON every 7 seconds to indicate the user need to replace the unit and that is approximately 5 years after installation. |

■ Installation Instructions:

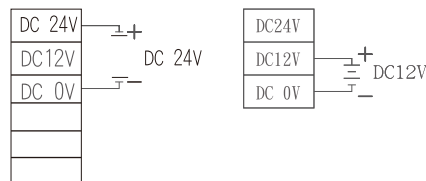
For combustible gas lighter than air (LNG-Methane), follow regulation below:

1. Detector should be installed within 4m of the gas appliance measured horizontally. If the ceiling is divided by 0.6m or bigger beam, detector should be installed at the side of beam near the gas appliance.
2. In a room with gas appliance where there is an air-intake vent near the ceiling, the detector should be installed close to the air-intake vent (the air-intake vent could be ignored if it is separated from gas appliance by a 0.6m or bigger beam).
3. Detector base should be within 0.3m of the ceiling.

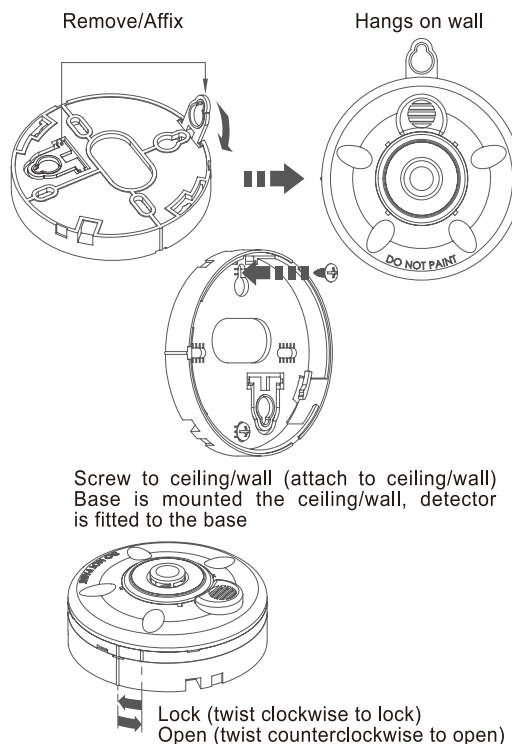
For combustible gas heavier than air (LPG-Propane), follow regulation below:

1. Detector should be installed within 4m of the gas appliance measured horizontally.
2. Top portion of detector should be within 0.3m of the floor.

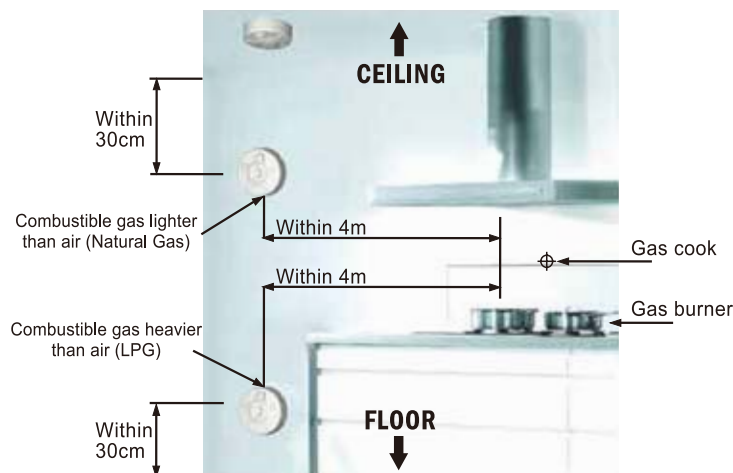
Wiring method



Mounting Detector



Installation



Locations To Avoid:

1. Do not install in garages or furnace rooms that may expose the sensor to substances that could damage or contaminate it.
2. Do not install in areas where the temperature is colder than 4.4°C (40°F) or hotter than 37.8°C (100°F) such as crawl spaces, attics, porches and garages.
3. Do not install direct to heating or cooking appliances.
4. Do not install near vents, flues, chimneys or any forced/unforced air ventilation openings.

Recommended Installation Locations:

Gas alarms should be mounted in or near bedrooms and living areas. It is recommended that you install a Gas alarm on each level of your home.

When choosing your installation locations, make sure you can hear the alarm from all sleeping areas. If you install only one Gas alarm in your home, install it near kitchen or furnace room.

The following is a list of substances that can damage the sensor or cause false alarm signal or not operating as intended :

1. Ethylene, ethanol, alcohol, iso-propanol, benzene, toluene, ethyl acetate, hydrogen, hydrogen sulfide and sulfur dioxide.
2. Also most aerosol sprays, alcohol based products, paint, thinner, solvent, adhesive, hair spray, after shave, perfume, auto exhaust (cold start) and some cleaning agents.

Five Year Limited Warranty

If after reviewing this manual you feel that your alarm is defective in any way, do not tamper with the unit. In many cases, the quickest way to exchange your alarm is to return it to the original place of purchase. Alternatively, you may return it for servicing to Horing Lih.

Horing Lih Industrial Co., Ltd.
4F, No. 18, Lane 327, Sec. 2, Chung Shan Road,
Chung Ho (235), New Taipei City, Taiwan
Tel: +886 2 2248 7599 (Rep.)
Website: www.horinglih.com