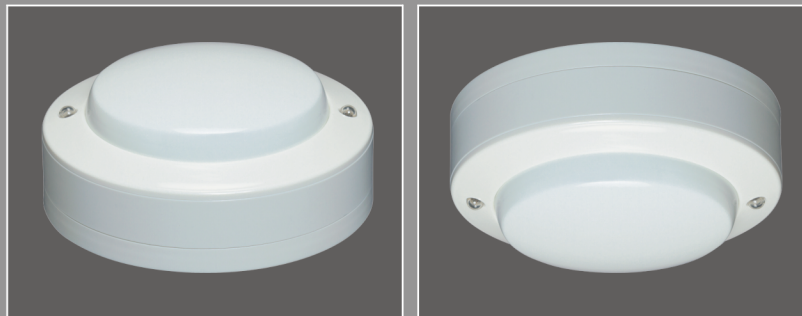


Rate of Rise Heat Detector

FIRE
ALARM
SYSTEMS



MODEL: HC-306A

▣ Features

1. With dual LED, easy to observe state of detector.
2. With large metal surface to expose the air to sense the temperature.
3. Easy install and replace.

▣ Specifications

Model No	HC - 306A	Overall structure	
Rated voltage	DC 12V-30V (24V)	Material	Fire-resisting ABS material
Standby current	0 μ A	Joint contact	Copper (zinc-plated)
Alarm current	60mA	Color	Ivory
Working temperature	-15~50 °C		
Working humidity	0~95% RH		
Size	103mm x 43mm		
Weight	150g		

▣ General wiring drawing

